



Improving
Healthcare
Together
2020 to 2030



Your local NHS is consulting on proposals to invest in both Epsom and St Helier hospitals and build a new specialist emergency care hospital at Epsom, St Helier or Sutton hospital.

Join us at one of our events and have your say.

This public consultation takes place from
8 January to 1 April 2020.

The consultation is led by NHS Surrey Downs, NHS Sutton and NHS Merton Clinical Commissioning Groups (CCGs). They are responsible for planning local healthcare services.

Why do Epsom and St Helier hospitals need to change?

Epsom and St Helier hospitals are facing a number of significant challenges. We need to take action if we are to keep hospital services within the Surrey Downs, Sutton and Merton area for generations to come.

There are three main reasons why hospital services need to change.



1. Quality

Epsom and St Helier hospitals do not have enough specialist doctors, nurses and clinical staff for some of the most important emergency services. Nationally, there is a shortage of these specialist staff.



2. Buildings

Many of the hospital buildings are older than the NHS, and over half of the hospital space is not suitable for treating patients to modern healthcare standards.



3. Finances

A huge amount of money is spent on temporary staff and maintaining buildings to keep our hospital services safe.

If we do not change how hospital services are provided in our area then quality and safety will get worse. We need to improve quality, invest in new buildings and run our hospitals with the money we are given.

We have now been allocated £500 million to make these changes.

Consultation events

Come along to any of our local listening events to find out more about our proposals and tell us what you think.

As well as the listening events listed below, there are other opportunities to have your say.

To find out more visit our website
www.improvinghealthcaretogether.org.uk

Surrey Downs



Tuesday 28 January 2020

from 1.30pm to 3.30pm

The King's Church Epsom,
Longmead Road,
Epsom KT19 9BU

Tuesday 11 February 2020

from 6.30pm to 8.30pm

Epsom Downs Racecourse,
Epsom Downs,
Epsom, KT18 5LQ

Tuesday 17 March 2020

from 6.30pm to 8.30pm

Bookham Community Association,
51 Church Road, Great Bookham,
Leatherhead, KT23 3PQ

Merton



Friday 24 January 2020

from 1.30pm to 3.30pm

Chaucer Centre,
Canterbury Road,
Morden, SM4 6PX

Wednesday 12 February 2020

from 6.30pm to 8.30pm

New Horizon Centre,
S Lodge Avenue,
Mitcham, CR4 1LT

Thursday 5 March 2020

from 6.30pm to 8.30pm

Chak 89,
105 Bond Road,
Mitcham, CR4 3HG

Sutton



Tuesday 21 January 2020

from 6.30pm to 8.30pm

Holiday Inn,
Gibson Road,
Sutton, SM1 2RF

Wednesday 12 February 2020

from 1.00pm to 3.00pm

The Phoenix Centre,
Mollison Drive,
Wallington, SM6 9NZ

Monday 2 March 2020

from 6.30pm to 8.30pm

St Helier Community Association,
Hill House, Bishopsford Road,
Carshalton, Morden, SM4 6BL

We want to improve the current buildings at Epsom and St Helier hospitals as well as build a new specialist emergency care hospital at Epsom, St Helier or Sutton.

District hospitals at both Epsom and St Helier

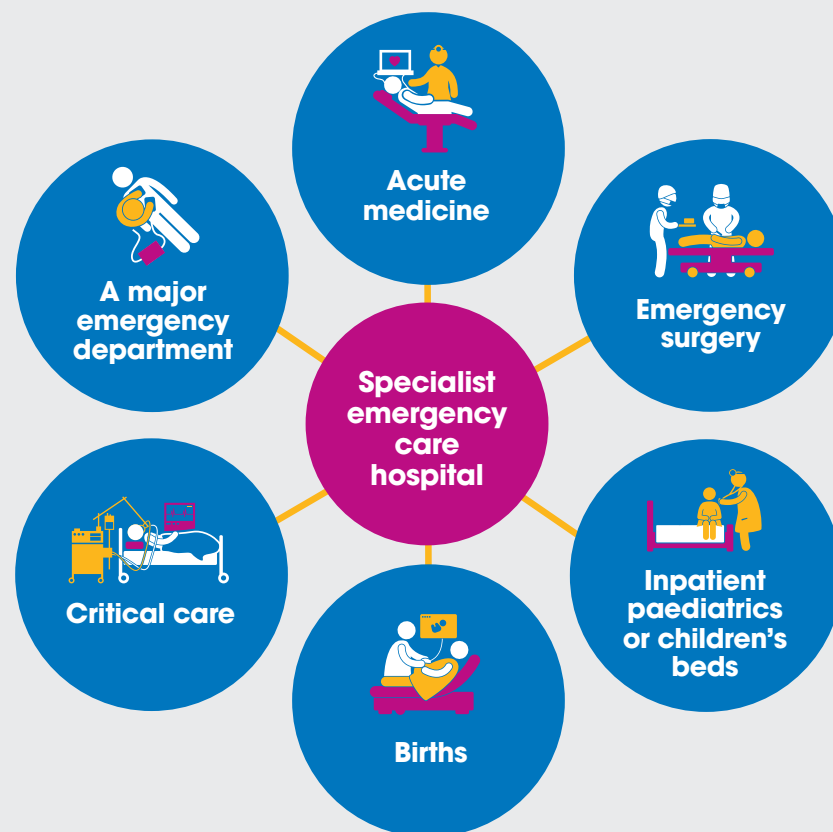
The majority of services would stay at both Epsom and St Helier hospitals in refurbished buildings. Both would provide 'district hospital' services 24 hours a day, 365 days a year, and have urgent treatment centres at each.



- Epsom and St Helier hospitals see around 2,500 patients a day
- 2,200 patients would be treated in Epsom and St Helier district hospitals
- 300 patients would be treated in the specialist emergency care hospital

Specialist emergency care hospital built at Epsom, St Helier or Sutton

We would bring together six core (major) services for the most unwell patients, those who need more specialist care, and births in hospital, onto one site in new state-of-the-art buildings.










Travel to the specialist emergency care hospital

In all our options the time it would take the majority of people to get to the specialist emergency care hospital, by car or blue light ambulance, would not change. Over 99% of people travelling by car or blue light ambulance would get there within 30 minutes.

Comparing the options for the site of a new specialist emergency care hospital

Preferred option

Criteria		Sutton	St Helier	Epsom
	Quality of care	All options deliver improved quality of care		
	Long-term clinical sustainability	Three urgent treatment centres Located with Royal Marsden, it would also improve care for Epsom and St Helier cancer patients	Two urgent treatment centres	Two urgent treatment centres
	Meeting the health needs of local people	Least overall effect on travel for older people and people from deprived communities	Greatest effect on travel for older people and least effect on travel for people from deprived communities	Least effect on travel for older people and greatest effect on travel for people from deprived communities
	Fit with the NHS Long Term Plan	All options would be similar to the NHS Long Term Plan		
	Impact on travel and access	Smallest increase in average travel time	Second greatest increase in average travel time	Greatest increase in average travel times
	How easy it is to deliver?	Easiest to build	More complicated to build	More complicated to build
	Finance	Best value for the taxpayer	Medium value for the taxpayer	Least value for the taxpayer

We want to know what you think

There are many different ways to have your say.

You can

Fill in the questionnaire on our website
www.improvinghealthcaretogether.org.uk

Come to any of our local listening events to tell us your views

Email us at hello@improvinghealthcaretogether.org.uk

Engage with us on Twitter @IHTogether or visit our Facebook page @ImprovingHealthcareTogether

Write to us at Opinion Research Services, FREEPOST SS1018,
PO Box 530, Swansea, SA1 1ZL

Call us on 02038 800 271 (Monday to Friday, 9.00am to 5.00pm)

Message us via SMS on 07500 063191

More information is available in our summary and full consultation documents on our website
www.improvinghealthcaretogether.org.uk

We will only make a final decision once we have completed this consultation and considered all the feedback we received and all the available evidence.

Whatever happens, none of the six services would be brought together until the new specialist emergency care hospital is built, which could take until 2025.

We look forward to hearing your views by 1 April 2020 and meeting you at one of our events.

If you would like this document in another format or language please call us on 02038 800 271 or email hello@improvinghealthcaretogether.org.uk

We will do our best to provide the information in a suitable format or language.